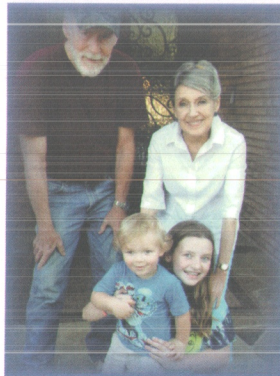


*A link has been broken in our family chain,  
but our love for you will live on  
All the memories we've shared will never fade  
and they will help to keep us strong  
And though we weren't ready for you to leave,  
we know we will all meet again  
Until then, heaven's new angel continues to be  
a loving guide and our best friend*

*~ KC '14*



### *Thank You*

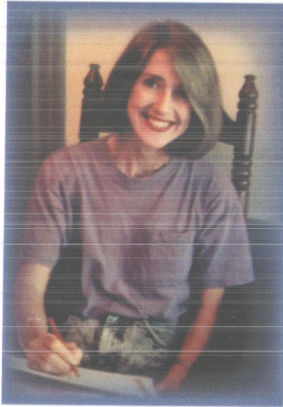
The family truly appreciates the many expressions of love, kindness, and sympathy shown to them during this difficult time.

A special thank you to Holly Tree Chapel and the team at Trinity Mother Frances as well for their tremendous love, care, and support.

## *Celebrating the life of* **Barbara Kylene Perry Nelson**



*September 5, 1941 - October 22, 2014*



*God looked around His garden  
And He found an empty place  
He then looked down upon the earth  
And saw your precious face*

*He put His arms around you  
And lifted you to rest;  
God's Garden must be beautiful  
He always takes the best*

*He knew that you were suffering  
He knew you were in pain  
He knew you'd never ever  
Get well on earth again.*

*So He closed your weary eyelids  
And whispered "Peace be thine"  
Then He took you up to Heaven  
With hands so gentle and kind.*

*It broke our hearts to lose you  
But you did not go alone  
For part of us went with you  
The day God welcomed you home.*

*~ Author Unknown*

## Celebration Service

*Barbara Kylene Perry Nelson*

Holly Tree Chapel  
Holly Lake Ranch, Texas

*2:00 pm  
November 9, 2014*

Prelude:	You're My Best Friend Don Williams
Pastoral Welcome & Prayer:	Pastor Tim Mink
Eulogy:	Brett Nelson Michael Cobb Rick Murphy
Shared Memories (open microphone):	Pastor Tim Mink
Memorial Message:	Pastor Tim Mink
Music (one of Kylene's favorites):	Glory, Glory Hallelujah Elvis Presley
Benediction:	Pastor Tim Mink

*The family invites you to join them after the service  
for light refreshments in the Fellowship Hall.*